

Nutstossen

von Längsnuten nach
DIN 138 und DIN 6885

broaching keyways according
DIN 138 und DIN 6885

Typ NPU

Schneideinsatz

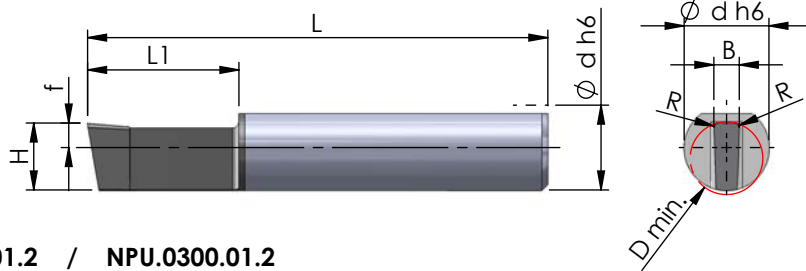
insert

Bohrungs-Ø ab 6 mm
Toleranzklasse C11 / JS9 / P9 / H9

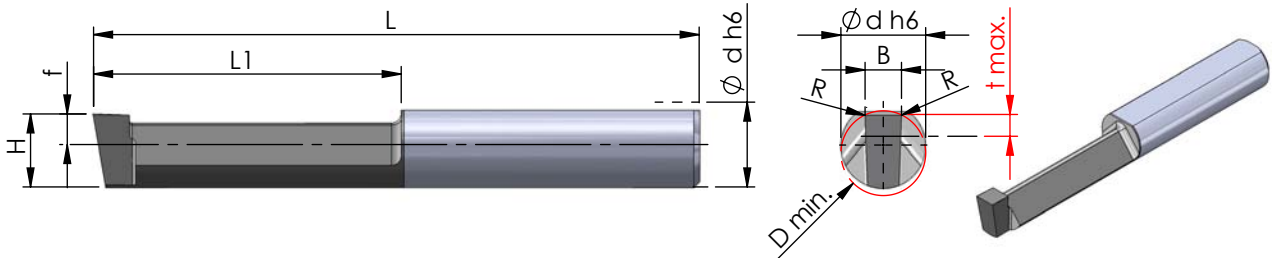
bore Ø from 6 mm
tolerance grade C11 / JS9 / P9 / H9



NPU.0... ..



NPU.0298.01.2 / NPU.0300.01.2



Abmessungen in mm

dimensions in mm



Bestellnummer part number	D min.	B	R	H +0.05	f	L	L1	Ø d h6	t max.	Schneideinsatz nach DIN	insert according DIN	K10F	AL41F	P18C	für Klemhalter for toolholder type
NPU.0210.03.1	6	2.1	0.35	5.5	2.0	38	12.5	7	-			●			NHU...
NPU.0310.03.1	7	3.1	0.35	6.2	2.7	38	12.5	7	-	C11		●			
NPU.0310.05.1	7	3.1	0.5	6.2	2.7	38	12.5	7	-	DIN 138		●			
NPU.0410.05.1	7	4.1	0.5	6.2	2.7	40	15	7	-	Standard		●			
NPU.0410.05.2	7	4.1	0.5	6.2	2.7	50	25	7	-			●			
NPU.0200.01.1	6	2.00	0.1	5.5	2.0	38	12.5	7	-			●			
NPU.0300.01.1	7	3.00	0.1	6.2	2.7	38	12.5	7	-			●			
NPU.0300.01.2	7	3.00	0.1	6.0	2,5	50	25	7	1.8	JS9 DIN 6885		●			
NPU.0400.01.1	7	4.00	0.1	6.2	2.7	40	15	7	-			●			
NPU.0400.02.1	7	4.00	0.2	6.2	2.7	40	15	7	-	leichter Sitz slightly fit		●			
NPU.0400.02.2	7	4.00	0.2	6.2	2.7	50	25	7	-			●			
NPU.0500.02.2	7	5.00	0.2	5.8	2.3	50	25	7	-			●			

neu

Bestellbeispiel:
für Sorte AL41F:
NPU.0210.03.1/AL41F

order-example:
grade AL41F:
NPU.0210.03.1/AL41F

Nutstossen

von Längsnuten nach
DIN 138 und DIN 6885

broaching keyways according
DIN 138 und DIN 6885

Typ NPU

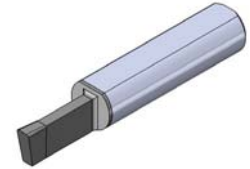
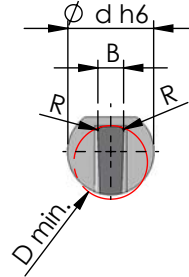
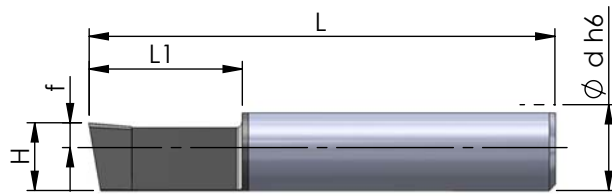
Schneideinsatz

insert

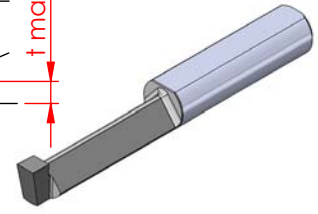
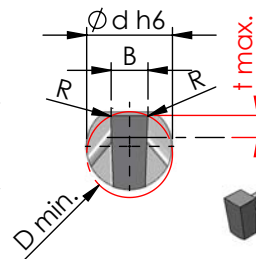
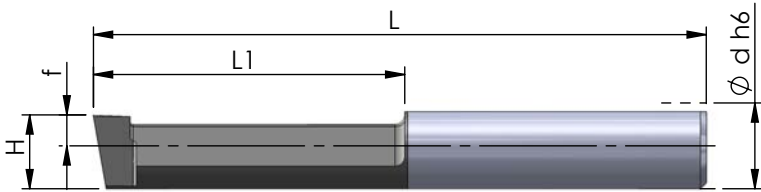
Bohrungs-Ø ab 6 mm
Toleranzklasse C11 / JS9 / P9 / H9

bore Ø from 6 mm
tolerance grade C11 / JS9 / P9 / H9

NPU.0... ..



NPU.0298.01.2 / NPU.0300.01.2



Abmessungen in mm

dimensions in mm

neu

Bestellnummer part number	D min.	B	R	H +0.05	f	L	L1	Ø d h6	t max.	Schneideinsatz nach DIN	insert according DIN	K10F	AL41F	P18C	für Klemmhalter for toolholder type
NPU.0198.01.1	6	1.98	0.1	5.5	2.0	38	12.5	7	-			●			NHU...
NPU.0298.01.1	7	2.98	0.1	6.2	2.7	38	12.5	7	-	P9		●			
NPU.0298.01.2	7	2.98	0.1	6.0	2.5	50	25	7	1.8	DIN 6885		●			
NPU.0398.01.1	7	3.98	0.1	6.2	2.7	40	15	7	-	fester Sitz strong fit		●			
NPU.0398.02.2	7	3.98	0.2	6.2	2.7	50	25	7	-			●			
NPU.0498.02.2	7	4.98	0.2	5.8	2.3	50	25	7	-			●			
NPU.020H.01.1	6	2.02	0.1	5.5	2.0	38	12.5	7	-			●			
NPU.030H.01.1	7	3.02	0.1	6.2	2.7	38	12.5	7	-			●			
NPU.040H.01.1	7	4.02	0.1	6.2	2.7	40	15	7	-	H9		●			
NPU.040H.02.2	7	4.02	0.2	6.2	2.7	50	25	7	-	DIN 6885		●			
NPU.050H.02.2	7	5.02	0.2	5.8	2.3	50	25	7	-			●			

Bestellbeispiel:
für Sorte AL41F:
NPU.0198.01.1/AL41F

order-example:
grade AL41F:
NPU.0198.01.1/AL41F